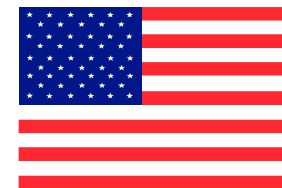


Direction and Suggestions for Installing 1964 Chevy Impala Trunk Panel Kit 917-4

*Thank you for buying
our trunk upholstery panels!*



www.customtrunkpanels.com



Made In The USA

Read This First Before Starting

Please Note, test fit all panels before covering;

Based on your particular car, you may find it necessary to custom-trim here and there, depending upon the type of material you choose to cover the trunk kit panels, how much foam you add or how you decide to custom finish your panels. If you find it necessary, a quick trim adjustment using an electric sander with 80 grit paper or a rasp file is all that will be required.

For some installations, it will be necessary to remove the spare tire hold down brackets using a cutoff wheel.

A typical stock trunk area is on most sedans and hardtops. This is where the installation process is the same, regardless. Trim sanding is all that will be needed.

For convertible, it will be necessary to trim the panels.

On the 1964 Impala, your kit contains 4 pieces of CNC cut hardboard finished both sides.

Tech Help Line, 724-418-1003



→ This is a bottom floor panel and two side panels for the Chevy Impala. There are 4 pieces to this kit. A suggestion is that a piece of carpeting material or material of your choosing is put down first and glued across the front of the trunk, near the trunk hinges, this is only a suggestion, then put the panel down as directed. The floor panel is big and needs to be placed in the trunk tilted to the right side first. Set the panel on the floor of the trunk then slide it back toward the rear of the trunk. On most Impala trunk's there is a metal fin that comes down the center of both fender wells, make sure the floor panel is under those fins and firmly on the trunk floor. (Note arrows) The taillight wires should be moved out of the way or wire tied up in order to seat the panel properly in the trunk. The space under the trunk panel floor will need some support, so use a 2X4 approximately 24" long. Place the board on edge in the middle of the trunk in order to stiffen the center of the floor panel. This area can also be used for storage if needed.



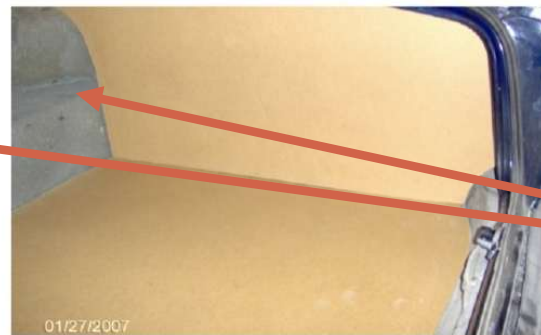
62-64 Impala Hardtop trunk installation and suggestions.



1. Floor panel is the first piece in the trunk.

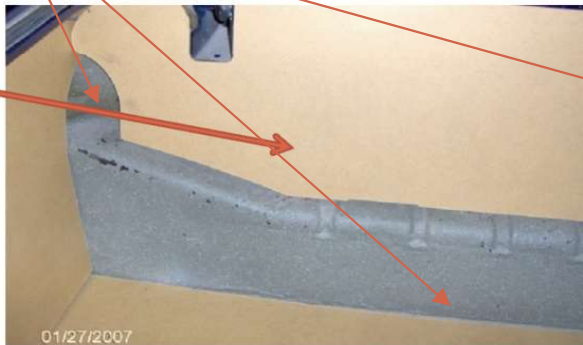


2. Left side panel is next.



3. Right side panel is next

→ This is the last panel to go in. It's the back panel with the cutout for the hinges. Put this panel into the trunk by tilting the top toward the trunk latch and then slide it up and into place. The wire coming down from the trunk lid can be put into the left hinge opening. It may get tricky here trying to keep the sides in place and getting the back panel where it belongs. The panels fit much tighter with material on them and will not move once set into place. This is where the pieces under the floor panel you started with are needed. The floor panel would sag if with weight on it if the 2X4 were not in place. Material will be needed in the areas where the arrows are.



4. Rear trunk panel installed last.



5. Test fitting is needed to insure proper clearance once material is added to the panels. Minor sanding with 80 grit will achieve proper fit.



Note there is no dip in the center of floor panel. If you put weight in the panel then you will need to add support by using 2X4's.

Now Available for Most Chevy's Trunk Panel Kits for Finishing with Trunk Upholstery

- Chevy 1955,56,57 Panel Kit No. 417-4
- Camaro 1967,68,69 Panel Kit No. 317-6
- Chevelle 1970-72 Panel Kit No. 517-7
- Chevy Nova 1968-72 Panel Kit No.817-5
- Mustang 1964,5,6 Panel Kit No. 1117-5
- GTO 1966-67 Panel Kit No. 718-5

Save time and money using our trunk panel kits from

www.customtrunkpanels.com Tech help 330-565-4688

